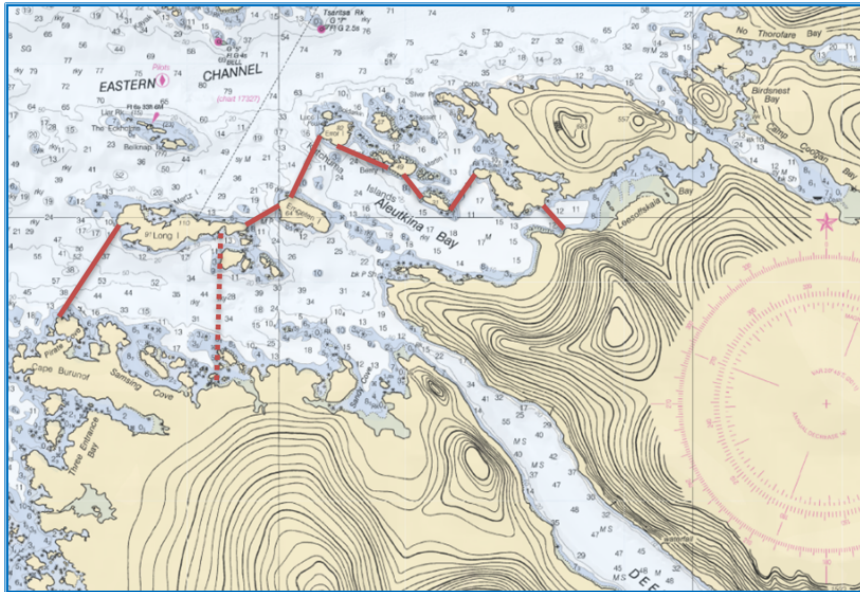


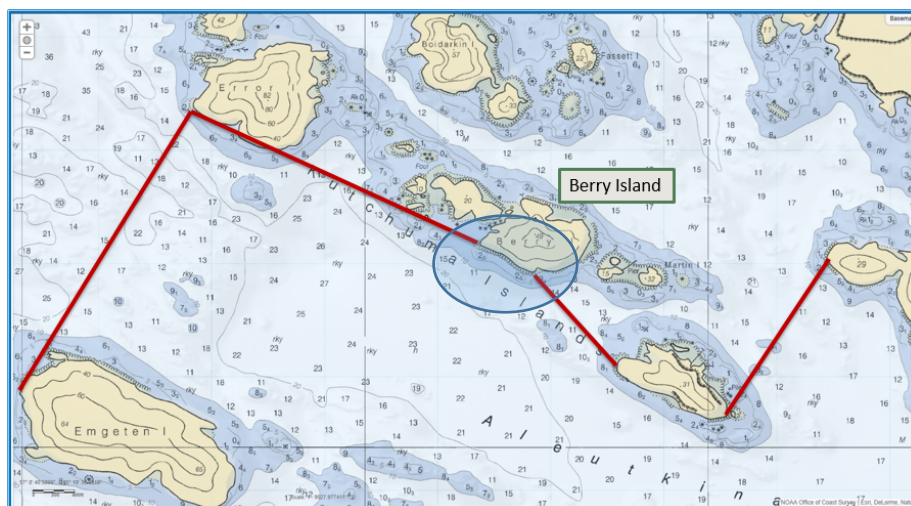
To Deep Inlet THA Fishery User Groups:

Berry Island Resident Impact and Noise Reduction Plan

The Deep Inlet Terminal Harvest Area boundaries encompass a number of private property residences on Long Island, Gull Island, and the Kutchuma Island Group, including Berry Island. NSRAA received a letter of complaint and public testimony at the NSRAA March 4/5, 2019 board meeting from a resident of Berry Island. Berry Island residents have a two-decade history of delineating negative impacts by fishing boats and tenders, particularly noise, firearm discharge, and lights, during the Deep Inlet fishery. NSRAA is asking tenders, seiners, gillnetters and trollers to not anchor, use high intensity lights, or tender fish near Berry Island within the Deep Inlet THA boundaries. When entering Deep Inlet via Silver Point, use no wake speeds to protect docks. Please be considerate.



Deep Inlet THA outer boundary, Berry Island is on the middle of the northeast line



Berry Island, part of the Kutchuma Islands, is heavily impacted by tenders' and fishing boats' lights and noise when anchoring off the west side of the island. Berry Island is private property, please do not disembark on the island or allow pets on the island.