

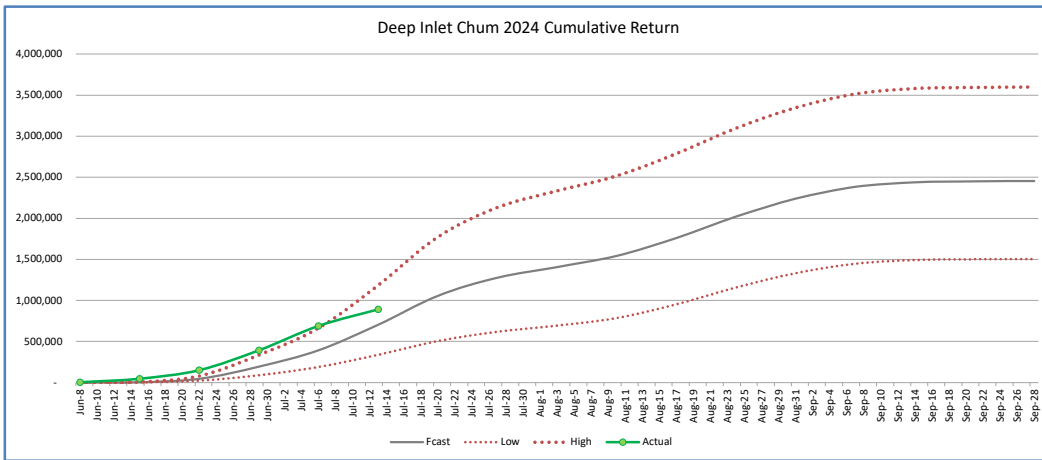
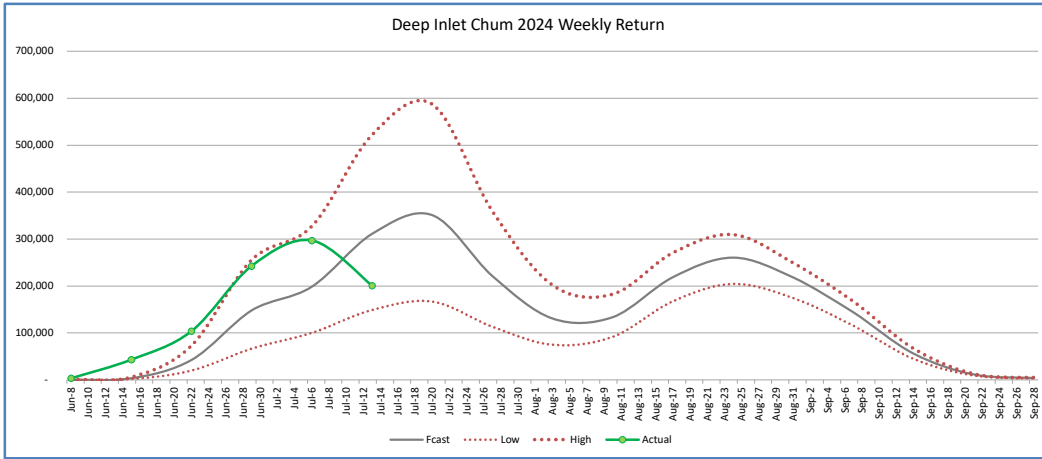
Deep Inlet 2024 Return - Catch Statistics

Last Update: July 15, 2024

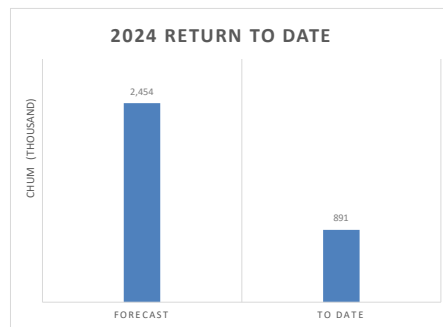
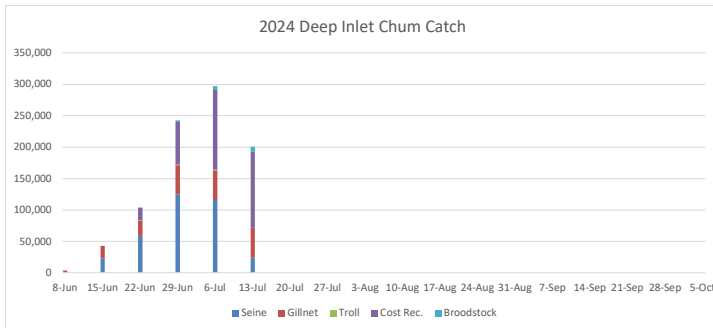
(FALL) Broodstock Goal:
to date:

Forecast:
to date: 2,454,000
890,983

36.3%



Total Deep Inlet return to date is 890,983 chum salmon.
This includes brood numbers estimated at the hatchery

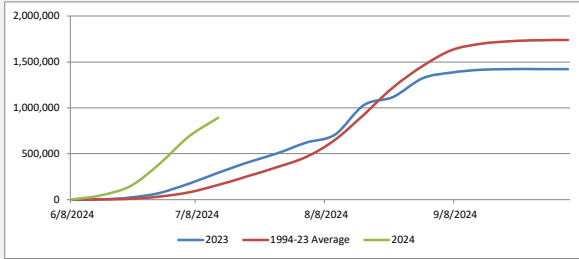


Deep Inlet Chum - Weekly Return

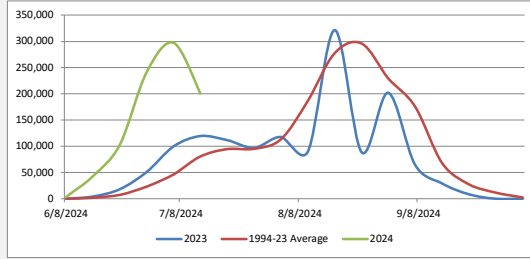
| STAT Week Dates | | | 2024 Number of Fish | | | | | Weekly Catch Totals | | |
|-------------------|---------|----------|---------------------|---------|---------|---------------|------------------|---------------------|-----------|-----------------|
| STAT WEEK | Begin | End | *Seine | Gillnet | **Troll | Cost Recovery | Hatchery/Surplus | 2024 | 2023 | 1994-23 Average |
| 23 | 6/2/24 | 6/8/24 | | 3,544 | | | | 3,544 | 65 | 159 |
| 24 | 6/9/24 | 6/15/24 | 23,047 | 20,056 | | | | 43,103 | 3,926 | 1,514 |
| 25 | 6/16/24 | 6/22/24 | 58,583 | 24,466 | 360 | 19,990 | 500 | 103,899 | 18,406 | 7,527 |
| 26 | 6/23/24 | 6/29/24 | 125,106 | 46,207 | 1,020 | 67,659 | 2,500 | 242,492 | 51,394 | 23,267 |
| 27 | 6/30/24 | 7/6/24 | 115,993 | 47,303 | 586 | 127,129 | 6,000 | 297,011 | 99,859 | 46,557 |
| 28 | 7/7/24 | 7/13/24 | 23,753 | 48,240 | 27 | 120,415 | 8,500 | 200,935 | 119,311 | 80,673 |
| 29 | 7/14/24 | 7/20/24 | | | | | | - | 111,394 | 94,803 |
| 30 | 7/21/24 | 7/27/24 | | | | | | | 96,974 | 95,273 |
| 31 | 7/28/24 | 8/3/24 | | | | | | | 117,541 | 113,212 |
| 32 | 8/4/24 | 8/10/24 | | | | | | | 89,843 | 186,906 |
| 33 | 8/11/24 | 8/17/24 | | | | | | | 321,318 | 277,820 |
| 34 | 8/18/24 | 8/24/24 | | | | | | | 88,554 | 295,861 |
| 35 | 8/25/24 | 8/31/24 | | | | | | | 201,914 | 229,641 |
| 36 | 9/1/24 | 9/7/24 | | | | | | | 64,649 | 175,824 |
| 37 | 9/8/24 | 9/14/24 | | | | | | | 28,960 | 68,559 |
| 38 | 9/15/24 | 9/21/24 | | | | | | | 8,466 | 27,571 |
| 39 | 9/22/24 | 9/28/24 | | | | | | | | 11,705 |
| 40 | 9/29/24 | 10/5/24 | | | | | | | | 2,544 |
| 41 | 10/6/24 | 10/12/24 | | | | | | | | |
| Totals | | | 346,482 | 189,816 | 1,993 | 335,192 | 17,500 | 890,983 | 1,422,575 | 1,739,416 |
| Percent of Return | | | 39% | 21% | 0% | 38% | 2% | 100% | | |

color = preliminary or some catch pending for these estimates
 * Seine catch includes any harvest from Silver Bay (113-35) or NSRAA chum in Sitka Sound (113-41)
 ** Troll catch includes NSRAA portion of Sitka Sound (113-41) harvest

Cumulative Return



Weekly Return



Deep Inlet Chum - Cumulative Return

| STAT Week Dates | | | 2024 Number of Fish | | | | | Cumulative Catch Totals | | |
|-----------------|---------|---------|---------------------|---------|---------|---------------|------------------|-------------------------|-----------|-----------------|
| STAT WEEK | Begin | End | *Seine | Gillnet | **Troll | Cost Recovery | Hatchery/Surplus | 2024 | 2023 | 1994-23 Average |
| 23 | 6/2/24 | 6/8/24 | - | 3,544 | - | - | - | 3,544 | 65 | 159 |
| 24 | 6/9/24 | 6/15/24 | 23,047 | 23,600 | - | - | - | 46,647 | 3,991 | 1,673 |
| 25 | 6/16/24 | 6/22/24 | 81,630 | 48,066 | 360 | 19,990 | 500 | 150,546 | 22,397 | 9,200 |
| 26 | 6/23/24 | 6/29/24 | 206,736 | 94,273 | 1,380 | 87,649 | 3,000 | 393,038 | 73,791 | 32,466 |
| 27 | 6/30/24 | 7/6/24 | 322,729 | 141,576 | 1,966 | 214,777 | 9,000 | 690,048 | 173,650 | 79,024 |
| 28 | 7/7/24 | 7/13/24 | 346,482 | 189,816 | 1,993 | 335,192 | 17,500 | 890,983 | 292,961 | 159,696 |
| 29 | 7/14/24 | 7/20/24 | | | | | | | 404,355 | 254,499 |
| 30 | 7/21/24 | 7/27/24 | | | | | | | 501,329 | 349,772 |
| 31 | 7/28/24 | 8/3/24 | | | | | | | 618,871 | 462,984 |
| 32 | 8/4/24 | 8/10/24 | | | | | | | 708,714 | 649,890 |
| 33 | 8/11/24 | 8/17/24 | | | | | | | 1,030,032 | 927,711 |
| 34 | 8/18/24 | 8/24/24 | | | | | | | 1,118,586 | 1,223,571 |
| 35 | 8/25/24 | 8/31/24 | | | | | | | 1,320,500 | 1,453,213 |
| 36 | 9/1/24 | 9/7/24 | | | | | | | 1,385,149 | 1,629,036 |
| 37 | 9/8/24 | 9/14/24 | | | | | | | 1,414,109 | 1,697,595 |
| 38 | 9/15/24 | 9/21/24 | | | | | | | 1,422,575 | 1,725,166 |
| 39 | 9/22/24 | 9/28/24 | | | | | | | 1,422,575 | 1,736,871 |
| 40 | 9/29/24 | 10/5/24 | | | | | | | 1,422,575 | 1,739,416 |

color = preliminary or some catch pending for these estimates
 * Seine catch could include harvest from Silver Bay (113-35) or Sitka Sound (113-41)
 ** Troll catch includes NSRAA portion of Sitka Sound (113-41) harvest

